

**BLUE GUM TREES ON TENTATIVE TRACT NO. 15419, HUNTINGTON BEACH**

**September 1998**

**Consulting Arborist's Report**

**Prepared for  
Hunsaker and Associates**

**Prepared by  
Alden Kelley**

## CONTENTS

Project elements . . . . .	1
Summary . . . . .	2
Background . . . . .	3
Description of trees . . . . .	3
Table 1. Blue gum characteristics . . . . .	5
Site map with approximate locations of trees . . . . .	7
Discussion . . . . .	8

### Appendices

1. Woodcrete™ and Brickcrete™ fences
2. Consultant qualifications

## PROJECT ELEMENTS

Report date: 9 September 1998

Site study date: 7 September 1998

Subject: Arborist's report on Blue gum trees in southeast corner of Tentative Tract No. 15419,  
Huntington Beach

Client: Hunsaker and Associates

Mr. Fred Graylee

3 Hughes Drive

Irvine, Ca 92618

Phone: 714/583-1010

### Objectives:

1. Describe subject trees.
2. Assign condition ratings.
3. Discuss options regarding preservation vs. removal.

## SUMMARY

There were 28 living Blue gum trees, 12 inches or more in trunk diameter, in the southeast corner of Tentative Tract No. 15419; an estimated 50 or more smaller specimens were seen but were not included in this report.

The trees included 1 which was rated at 75% (superior), 13 rated at 60 - 70% (average), 9 rated at below average (45 - 55%), and 4 rated as extremely poor (15 - 20%).

A majority of the trees were located outside the designated residential lot areas; there were 9 viable trees situated at or inside the perimeter of tentative lot no. 12, and on/at the edge of tentative lot no. 11. The remaining lots were situated in a treeless area presently under cultivation.

Four trees (nos. 10, 11, 20, 25) were recommended for removal. The remainder were judged to be suitable for retention *in situ*, provided that they are given appropriate protection and care, and that they not be subjected to undue construction impact (e.g., marked grade changes, nearby trafficways, underground utility lines close to trunk bases, and other such conditions).

## BACKGROUND

On 7 September 1998, the consulting arborist inspected Blue gum trees (*Eucalyptus globulus*) in the southwest corner of Tentative Tract no. 15419, Huntington Beach.

The present report includes a description of 28 live trees and one dead tree having trunk diameters of 12 inches or more, and a discussion regarding potentials for their preservation in the pending development.

## DESCRIPTION OF TREES

Trees having trunk diameters of 12 inches or more were numbered from the southerly end of the stand: numbers showing their approximate locations are given on the included copy of a portion of the tract map.

The Blue gums were situated in three or four more or less separate groups, each containing a number of specimens having trunk diameters (at 4.5 feet above soil surface) less than 12 inches. For the most part the stand density in each group was such as to have yielded a closed canopy (i.e., few gaps between adjacent crowns).

Comparison of field references (such as the pipeline and existing road) with the tract map indicated that trees no. 1 - 5 and 18 - 29 would be outside future residence lots. The remainder were located predominantly in tentative lot 12.

Condition rating percentages and their meanings are given below.

- 90 - 100%: Excellent; prime candidate for retention *in situ*, if preservation is feasible in terms of grade changes, building or road placement, and other development parameters.
- 75 - 85%: Superior, good retention potential, if feasible under specified development features.
- 60 - 70%: Average; suitable for retention under conditions of limited impact by development activities.
- 45 - 55%: Below average; could be retained if given effective management, and if not adversely affected by development operations.
- 30 - 40%: Poor, not recommend for retention.
- 15 - 25%: Extremely poor; recommend removal.
- 0 - 10%: Dead or dying; remove.

Trees no. 10, 11, 20 and 25 were rated extremely poor (15 or 20%). Trees no. 3, 12, 16, 17, 19, 21, 23, 24, 26 and 28 were rated below average (45 - 55%). Trees no. 1, 2, 4-9, 13, 14, 18, 22 and 29 were rated average (60 - 70%). Tree no. 15 was rated superior (75%). Tree no. 27 was dead.

The majority showed good leaf color and density, and sound (or correctable) structure.

TABLE 1. BLUE GUM CHARACTERISTICS

ID no.	Trunk diameter (in.)	Size estimate		Condition rating (%)
		Height (ft.)	Spread (ft.)	
1	12	25	25	65
2	6, 5.5, 5	30	20	60
3	5, 4.5, 4	30	30	50
4	13.5, 6	40	35	60
5	11, 8, 7, 5, 4	30	30	65
6	13, 7.5, 3	30	35	65
7	9.5, 6.5, 3, 2	35	35	60
8	12, 10	45	30	65
9	25.5, 14, 5, 3	50	55	65
10	11, 10	30	25	20
11	12, 5.5	30	25	20
12	14, 12.5, 8, 3.5	30	35	55
13	20, 17, 14, 8	60	50	70
14	13, 3	35	30	65
15	17, 14.5, 9.5, 5, 3	55	45	75
16	12	35	25	50
17	9, 7	25	25	50
18	13, 5, 5, 4, 2	30	35	65
19	8, 5.5, 4	25	25	50
20	12, 5, 2	40	20	15
21	11, 4, 4	35	30	55

ID no.	Trunk diameter (in.)	Size estimate		Condition rating (%)
		Height (ft.)	Spread (ft.)	
22	14	50	35	65
23	13, 9	45	45	55
24	14.5	35	25	45
25	11, 4	35	15	15
26	13	45	25	50
27	20	---	---	0 (dead)
28	11, 10, 9, 5, 4, 2.5	40	50	55
29	17	50	40	70

106027.44  
AC 14 89  
33.68

BRUSH

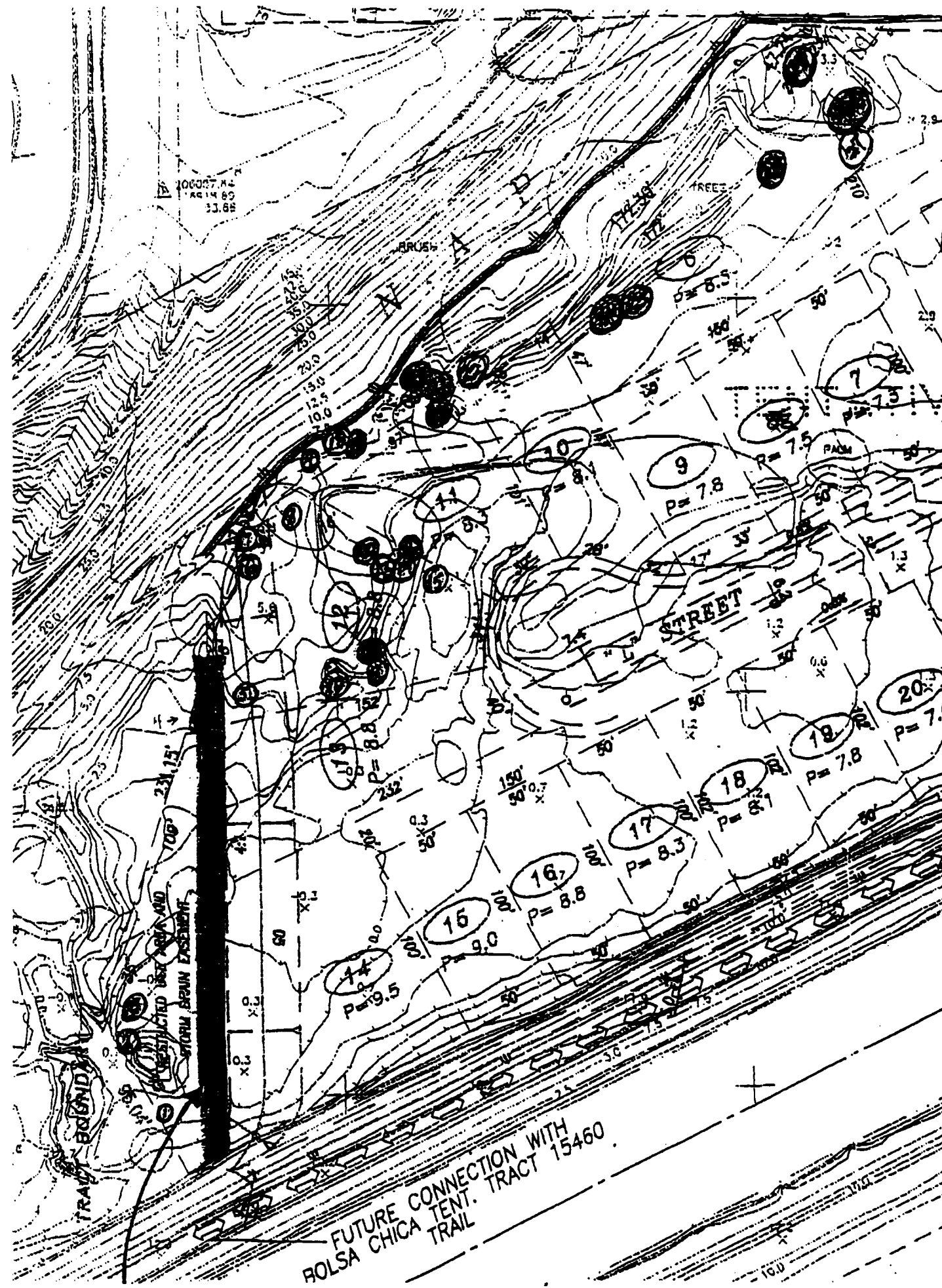
TREES

STREET

TRAIL BOUNDARY

RESTRICTED USE ZONING  
UTAH SEVEN EXEMPT

FUTURE CONNECTION WITH  
HOLSA CHICA TENT. TRACT 15460  
TRAIL



## DISCUSSION

If the consulting arborist was correct in the interpretation of tree location relative to future lot designations, most of the Blue gums would be outside the residential areas; and those within home sites would be near lot edges.

It would thus seem feasible to retain a majority of the trees, assuming that there would not be unduly adverse conditions such as marked grade changes, underground utility lines near trunk bases, or other such construction processes.

In the event that some of the trees are to be retained, they should be protected by appropriate fencing before construction operations begin, and should receive the usual preventive and corrective measures specified for existing trees in construction zones.

It is suggested that property line fences near standing trees be of the Brickcrete™ or Woodcrete™ type to minimize injury to tree roots, and to assure increased structural longevity of the fences. (See Appendix I.)